

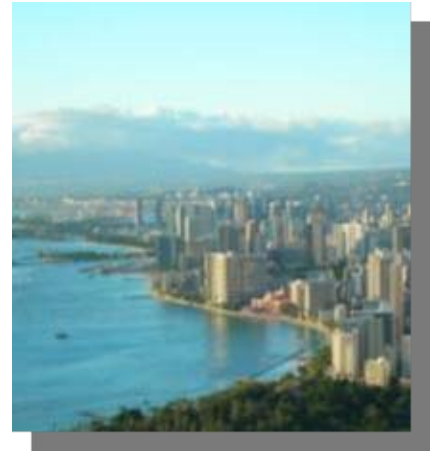
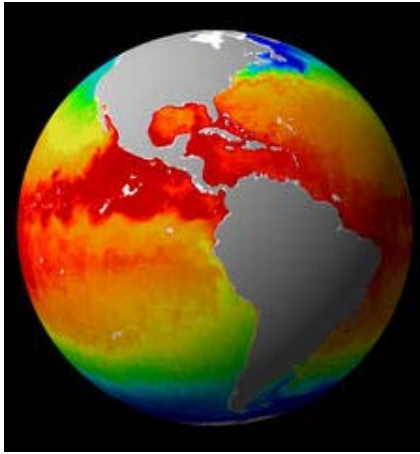
# Linking Economic Recovery and Community Resilience

Margaret A. Davidson  
Director, NOAA Coastal Services Center

2009 Hawaii Congress of Planning Officials (HCPO)  
Hawaii Geographic Information Coordinating Council (HIGICC) Conference:



**NOAA Coastal Services Center**  
LINKING PEOPLE, INFORMATION, AND TECHNOLOGY



**Community resilience is a complex national issue with locally focused impacts and solutions.**





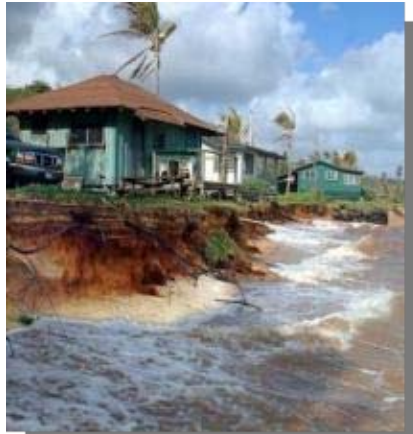
**Community resilience is an economic imperative.**





**Resilient communities prepare for impacts before they occur, rebound quickly and efficiently, and adapt in the face of adversity.**





**Risk should be driving decision-making regarding development and redevelopment, but it is not.**



# Opportunities

- Improve risk communication
- Share best practices
- Enhance ecosystem services
- Integrate social science



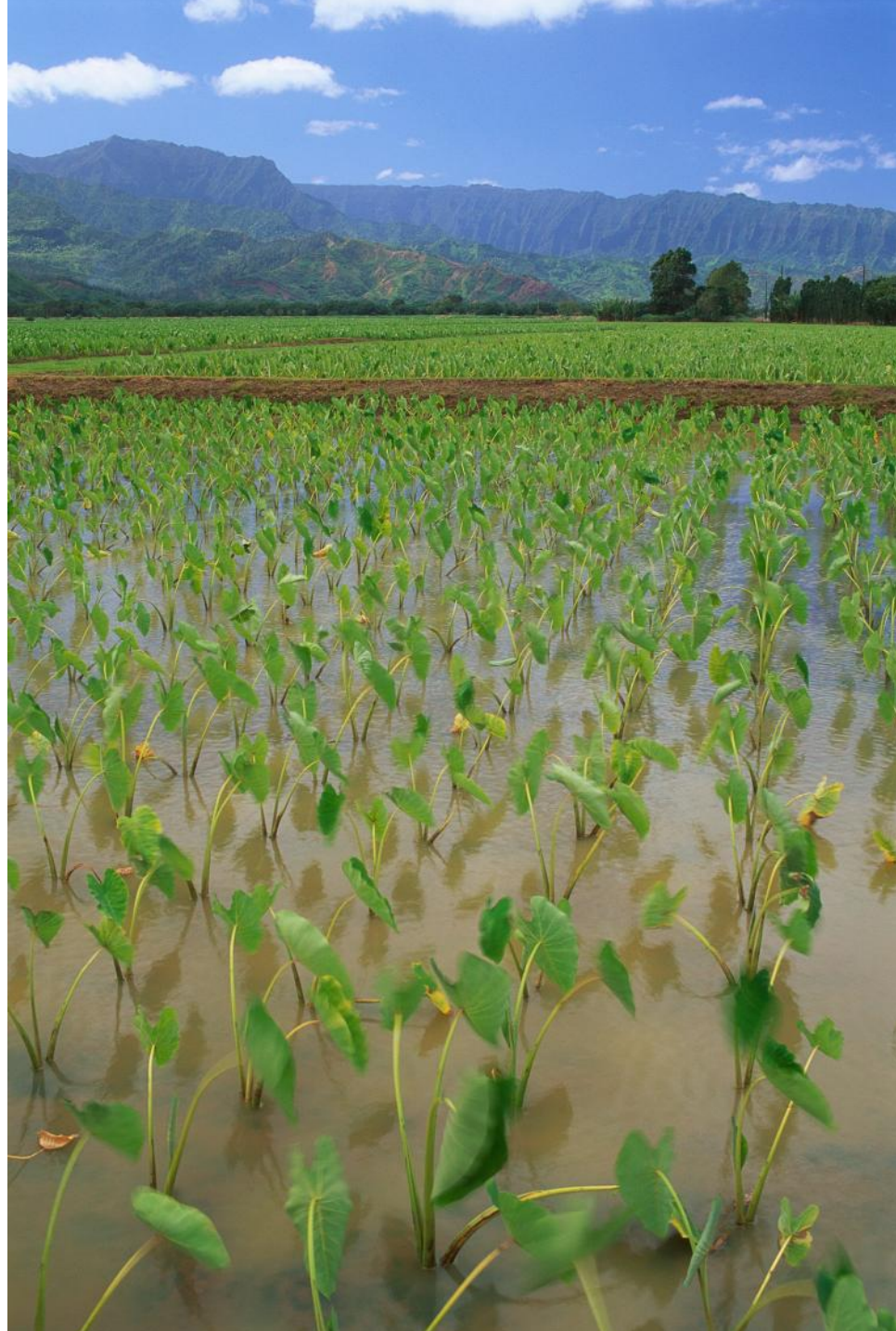


**Interagency, regional, and public–private partnerships are key to successful outcomes.**



**“Short-term economic growth is what you get when you make decisions without considering the ecosystem.**

**Long-term prosperity is what you get when you work economics with ecosystems.”**





# **NOAA Coastal Services Center**

**LINKING PEOPLE, INFORMATION, AND TECHNOLOGY**